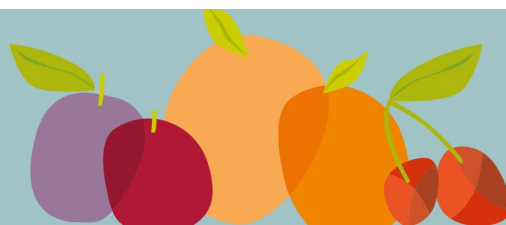




# market update



29 Jan 2024

## North Island

Chinese New Year is just around the corner on 10 February. Fruit, especially large red or white product, will be in demand on the days leading up to Chinese New Year. Schools are also back, which can increase demand too.

Supermarket shelves are still full of plenty of good-looking fruit, even with the rain last week of 100mm in Bay View and half that further inland. Temperatures have been a little all over the place with some cool days and corresponding lower evapotranspiration (ET) rates. The peach and nectarine harvest will come to an end in the next couple of weeks. The plum harvest will carry on for a while yet.

For the coming week, there is no real rain anticipated but the temperatures are not hot and settled. Mild weather will see potential evapotranspiration (PET) rates of 3-5 mm/day

## South Island

Central Otago is a bit all over the place weather wise as well. There were some mild and warm days and in places, even a couple of cool days. Rainfall was only 10 mm or less across the district and ET in the 2-7 mm range. This weather pattern is slowing fruit ripening especially for peaches and nectarines. The coming week will see similar mild temperatures with a similar effect on ripening progression. PET this week will be 3-6 mm/day, suggesting less variability than last week.

## cherries

LOW

MED

HIGH

- The bulk of the crop is now picked and by this time next week, only stored fruit will be available.
- Sweetheart and Staccato are the varieties available.

## apricots

LOW

MED

HIGH

- Lots and lots of apricots are available. These are looking and tasting good. Those who are exporting will be helping to balance domestic supply and demand.
- Sundrop is still available and Clutha Gold harvest is in full swing. Other varieties available include Vulcan, Valley Gold and Moorpark. NZSummer 2 harvest has started in a few orchards with the bigger blocks to start very soon.
- Nevis 160 harvest will start next week.

## nectarines

LOW

MED

HIGH

- In Hawkes Bay, Honey style nectarines have largely finished with classic style fruit nearing the end. There is a tidy up pick of Orin and Fantasia with August Fire still a week away from harvest.
- Areas of Central Otago are picking Mid Star2, but most orchards are waiting for some warmer weather to speed ripening. Varieties that are due for harvest soon include Fantasia and Bright Pearl.
- Generally, there is a hole in nectarine supply at this stage.

## peaches

LOW

MED

HIGH

- Honey peaches are available from both districts. Central Otago will be the sole supplier soon.
- Golden peach supply is very good with Tatura Belle and soon, Tatura Star.
- Central has improved Flavorcrest, Flamecrest and Flatto whites, with Sweet Dream just starting. Coconut Ice and Southern Ice white fleshed peach are still available.
- Rome Star will start next week.

## plums

LOW

MED

HIGH

- Fortune and Primetime are dominating the market, all from Hawkes Bay. There is plenty available, with large fruit in demand.
- Other varieties available include Black Amber and Black Doris.
- Greengage harvest has started in Central Otago and will be joined by Fortune from there next week.

Market update by Richard Mills, Technical Advisor, Summerfruit NZ, email [richard.mills@summerfruitnz.co.nz](mailto:richard.mills@summerfruitnz.co.nz)

Note: The information supplied is based on communication with summerfruit growers, marketers, retailers and other relevant industry parties. Information supplied on cherries, apricots, nectarines, peaches and plums can alter after publishing due to unexpected weather events, market forces, and other events relevant to the industry. Seek daily advice on supply from your summerfruit supplier.