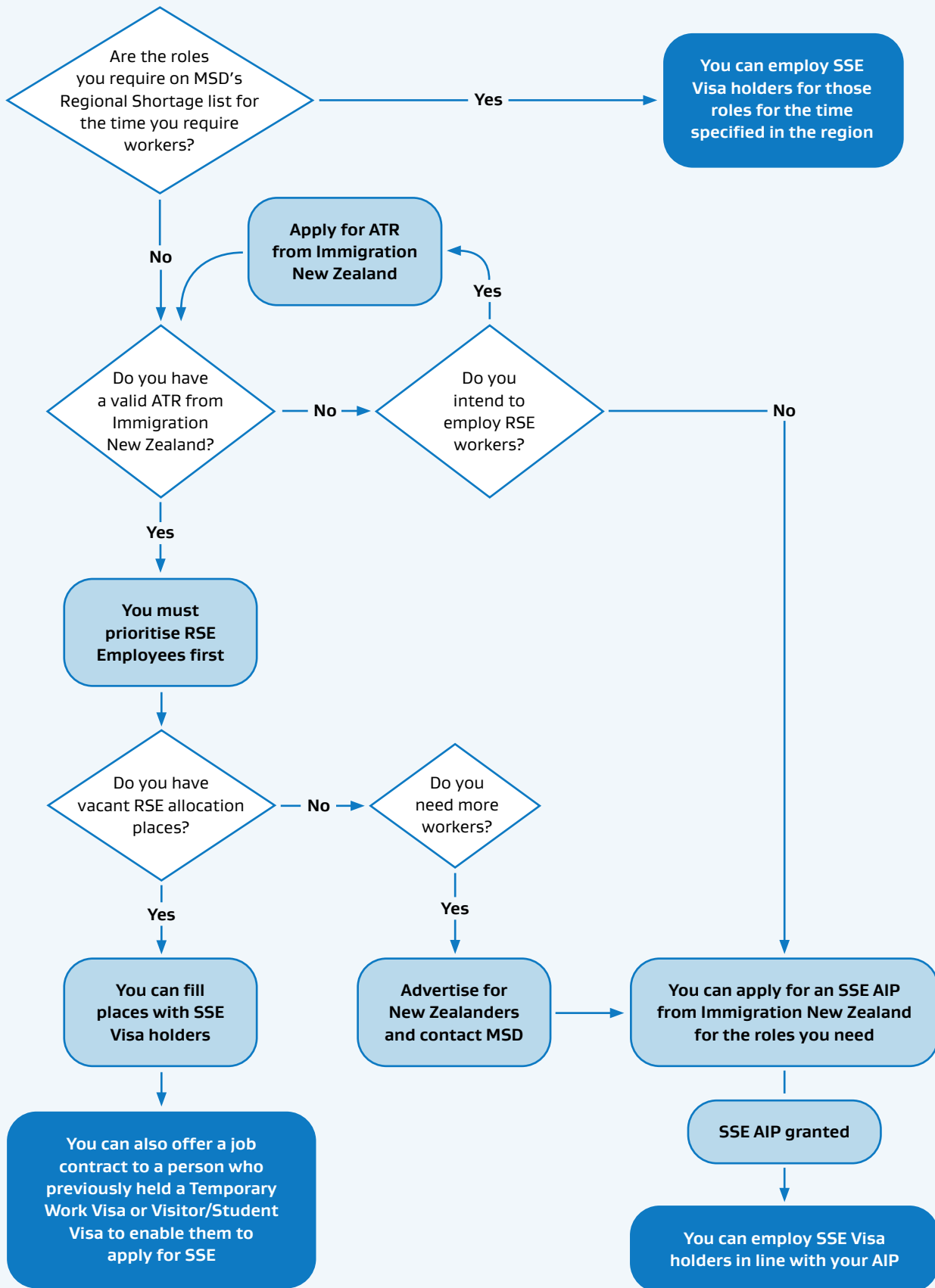


RSE Employer



Work, Visitor and Student Visa holders

If you hold a Work, Visitor or Student Visa that is due to expire, you can apply for a Supplementary Seasonal Employer Visa

You will need a job offer from:

- An employer who holds an SSE AIP or
- An RSE ATR employer with spare positions or
- Any Horticulture or Viticulture employer with specific roles | within a region | for length of time as specified by MSD

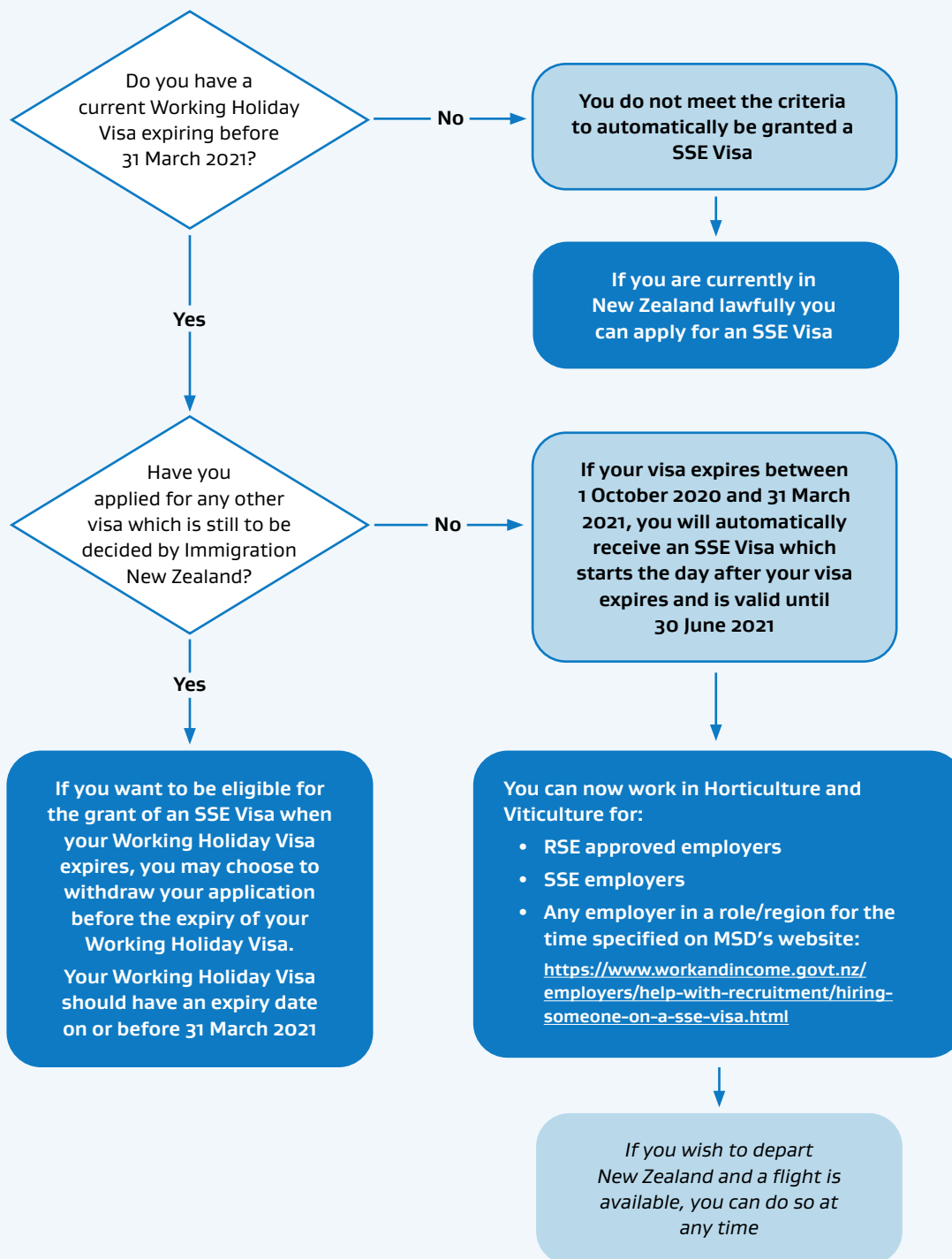
For Work Visa holders your SSE Visa will be issued until 30 June 2021

For Student or Visitor Visas who have not previously held a work visa, your visa will be issued for six months or until 30 June 2021 (whichever is longer)

If your visa expires after 30 June 2021 you will only be able to work for an SSE Employer from that date

Working Holiday Visa

Transition to Supplementary Seasonal Employer (SSE) Visa



Horticulture and Viticulture Non - RSE Employers

