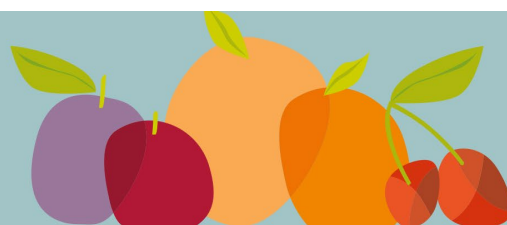




market update



23 Jan 2024

North Island	<p>Summerfruit is eating well, selling well and is priced well. Consumers are staying with summerfruit due to this season's consistent quality. The shortage of other fruit is also helpful. This week will see no change to this scenario, with Hawkes Bay peaches and nectarines having another two weeks of full supply. There should also be room for Central Otago fruit as the southern volume builds.</p> <p>Last week was hot in Hawkes Bay, with the growing degrees days (GDD) at the Longlands station now recording the highest total (1 Sept – 22 Jan) of the last five seasons at 995 units. There was up to 10mm of rain across the region with warm days and evenings. The coming week will see cooler temperatures, and bits and pieces of drizzle. This will be a welcome reprise for workers and trees, and a chance to catch up on fast maturing blocks.</p>
South Island	<p>Central Otago GDD is as good as it gets with the Clyde Research Station up to 628 units. There has been some rain recorded at the stations in the region of 12 to 19mm, and more in other areas. This may have some impact on late cherries. There were varying amounts of rain across the district today, and there will be a little more in some parts in the coming week. Like Hawkes Bay, the temperatures are predicted to be mild during the day and cooler at night. Cromwell is expecting an overnight minimum of 4°C.</p>
cherries	
	LOW MED HIGH
<ul style="list-style-type: none"> ➤ The big hump in supply has or is about to pass but there are still good volumes of cherries to come. Another tranche of growers will finish by this weekend. The rain today and bits anticipated may shorten supply for a wee while. ➤ Varieties available include Staccato, Sweetheart and Centennial. ➤ The later orchards may continue harvest to the end of this month or start of February. 	
apricots	
	LOW MED HIGH
<ul style="list-style-type: none"> ➤ Lots and lots of apricots are available. These are looking and tasting good. There is some exporting, which could help to balance supply and demand. Fruit size is medium. ➤ The is still Sundrop available and Clutha Gold harvest has begun. Other varieties available include Vulcan, Clutha Fire, Valley Gold and Moorpark. Nevis 160 and NZ Summer 2 are still 10 days away. 	
nectarines	
	LOW MED HIGH
<ul style="list-style-type: none"> ➤ In Hawkes Bay, Honey style nectarines have another week of supply and Classic style, another three weeks. Some white fleshed Majestic Pearl is available. ➤ Central Otago is picking Spring Bright, Spring Red, Big Orange and white fleshed Kay Pearl. Summer Bright and Mid Star harvest will commence soon. 	
peaches	
	LOW MED HIGH
<ul style="list-style-type: none"> ➤ Hawkes Bay will have Honey peaches available this and next week, with classics supply shortening next week. ➤ Golden peach supply is very good with Tatura Belle and then Tatura Star soon. ➤ Central has Improved Flavorcrest, Rich Lady and Flatto whites now with Sweet Dream starting soon. Blazing Star harvest will start next week and be available in good volume. ➤ Coconut Ice and Southern Ice white fleshed peaches will be available soon as well. ➤ There will be a well-timed transition from Hawkes Bay volume supply to Central Otago supply. 	
plums	
	LOW MED HIGH
<ul style="list-style-type: none"> ➤ Fortune and now Primetime are dominating the market, all from Hawkes Bay. There is plenty available. ➤ Other varieties available include Black Amber and Black Doris. ➤ Greengage has been mentioned as not being too far away. 	

Market update by Richard Mills, Technical Advisor, Summerfruit NZ, email richard.mills@summerfruitnz.co.nz

Note: The information supplied is based on communication with summerfruit growers, marketers, retailers and other relevant industry parties Information supplied on cherries, apricots, nectarines, peaches and plums can alter after publishing due to unexpected weather events, market forces, and other events relevant to the industry. Seek daily advice on supply from your summerfruit supplier.