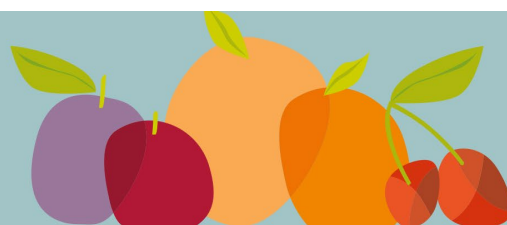




market update



6 Dec 2023

North Island	<p>A visit to the local supermarkets suggests that the season has not really got going yet as the shelves have only thin supplies. Correspondents from around the country are saying similar things. Bits and pieces, waiting for supply but there will be more next week. Growing degree days (GDD) are 40, 50 or even 70 units behind this time in 2020. This is as much as 20% down on that season. There was one hot day at the Longlands weather station, but mostly temperatures in the low 20's and varying amounts of rainfall. No wonder the fruit is just not coming on. More sunshine please.</p> <p>More of the same is predicted for the coming week, with temperatures in the teens and low 20's with only 10-15mm of rain predicted.</p> <p>Markets are looking for Summerfruit as the pipfruit season draws closer to a finish.</p>
South Island	<p>Marlborough GDD are on par with 2020 and 2022, with 359 units, but not as high as 2021 where the same day accumulation was 401 units. The coming week is suggesting temperatures in the low 20's, no real rain but potential evapotranspiration (PET) of only 2mm/day.</p> <p>Central Otago has generally had maximum temperatures in the mid-teens and low twenties with no rain. GDD accumulation ranges from 205 to 260 units which is almost into the range where the early cherry varieties will take over from the very early types. Similar temperatures are expected this week with some rain, in the range of 20-25 mm over the week. PET is predicted to be higher than Marlborough or Hawkes Bay at 3-4 mm/day – which is still not a lot.</p> <p>All of the stonefruit growing regions are wanting more good solid sunshine to get this season properly underway.</p>

cherries	LOW	MED	HIGH
<ul style="list-style-type: none"> ➤ Hawkes Bay has several varieties being picked including the last of Rosann, plus Sonnet and Santina, with growers in early areas thinking about Stella. Lapins are turning colour and waiting for some heat to bring them on. With luck there will be Lapins available for Christmas week sales. ➤ Blenheim growers are picking good sized clean fruit. Rosann is having the final picks; Stella will start at the end of the week with Lapins soon after that. Harvests are a bit delayed due to the lower temperatures. ➤ The firm crunchy cherries from Central Otago are 10-14 days away yet and will be in time for Christmas markets. For now, there is Rosann and bits Samba, Sonnet, Chelan and Dawson being picked. This early fruit will generally stay in the South Island markets. Fruit from the greenhouses is anticipated to be in Auckland next week. 			
apricots	LOW	MED	HIGH
<ul style="list-style-type: none"> ➤ Royal Rosa is still being picked by some but will be finishing shortly in Hawkes Bay. Sundrop is beginning to colour and there might be a few to pick next week. ➤ Central Otago has picked a few of the very early NZS4 which will be staying locally in fruit stalls. 			
nectarines	LOW	MED	HIGH
<ul style="list-style-type: none"> ➤ There is a limited volume of small MayGlo to finish, the low volumes of Armredark are basically gone and there is small volumes of Rose Diamond available with more to come next week. Early Star, the first of the newer style of nectarine is just starting with volume expected to build next week. ➤ We are anticipating Honey Fire and Diamond Bright to start late next week. 			
peaches	LOW	MED	HIGH
<ul style="list-style-type: none"> ➤ Peaches have been the standout performer so far this season. Spring Fire has done well, looking good on shelves and eating well. This variety along with Springcrest is nearing its finish for this season. ➤ There is some Spring White in the market, with Spring Lady and June Lady expected soon. 			
plums	LOW	MED	HIGH
<ul style="list-style-type: none"> ➤ There are a few pallets only Red Beaut in the market with light to moderate volumes of Rose Zee anticipated very soon. 			

Market update by Richard Mills, Technical Advisor, Summerfruit NZ, email richard.mills@summerfruitnz.co.nz

Note: The information supplied is based on communication with summerfruit growers, marketers, retailers and other relevant industry parties. Information supplied on cherries, apricots, nectarines, peaches and plums can alter after publishing due to unexpected weather events, market forces, and other events relevant to the industry. Seek daily advice on supply from your summerfruit supplier.